

**Features**

- Member of the KS-H-130/140 family small sized VHF/Hyperband/UHF tuner
- Systems CCIR: B/G, H, L, L', I, I'; OIRT: D/K
- Digitally controlled (PLL) tuning via I<sup>2</sup>C-bus
- Tuner for horizontal and vertical mounting available
- Off-air channels, S-cable channels and Hyperband
- World standardized mechanical dimensions and world standard pinning
- Weak signal booster (I2C controlled switchable gain amplifier)
- Low power
- Comply to "CENELEC EN55020" and "EN55013"

**Application**

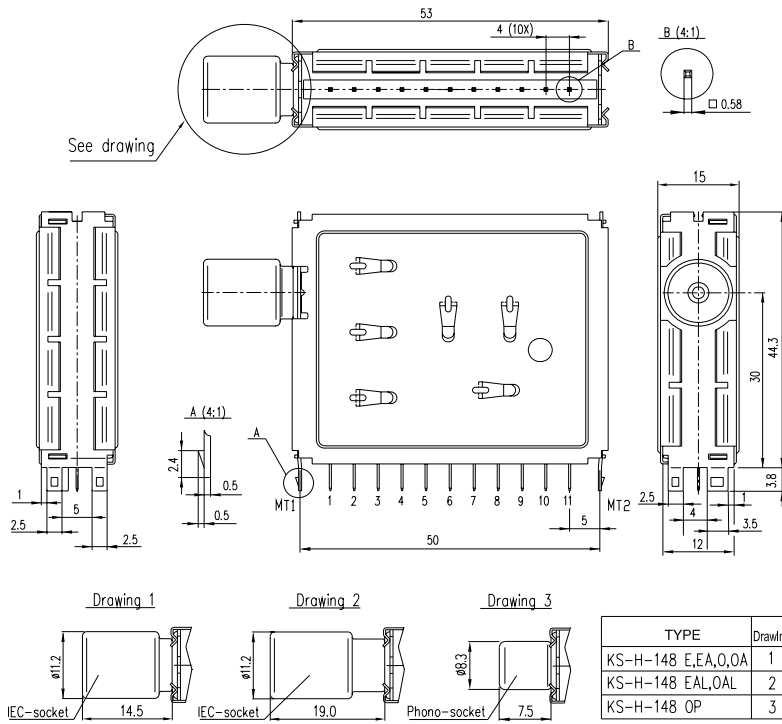
- For TV and VCR

**Electrical data**

Model No		KS-H-148 E, ...	KS-H-148 EA, ...	KS-H-148 O, ...	KS-H-148 OA, ...
Receiving system		CCIR B/G, H, L, L', I, I'		OIRT D/K	
Channel selection system		PLL (I <sup>2</sup> C bus)			
RF input type		IEC 14.5mm (female) or long IEC 19.0mm, phono			
Input frequency p.c., MHz	VHF-L	48,25-154,25		49,75-151,25	
	VHF-H	161,25-439,25		159,25-439,25	
	UHF	447,25-855,25		447,25-855,25	
Input impedance, Ω		75			
Input VSWR, max		4			
IF output type		Symmetrical	Asymmetrical	Symmetrical	Asymmetrical
Intermediate frequency, MHz	Picture	38,9		38,0	
	Sound	33,4		31,5	
Power supply, V/mA		5/110			
Tuning voltage supply, V		33			
AGC range (4-0,3V), dB, min	VHF-L, VHF-H	45			
	UHF	40			
Voltage gain, dB, min		40			
Noise figure, dB, max	VHF-L, VHF-H	9			
	UHF	8			
Image rejection, dB, min	VHF-L	66			
	VHF-H	56			
	UHF	50			
IF rejection, dB, min		65			

**ORDERING INFORMATION**

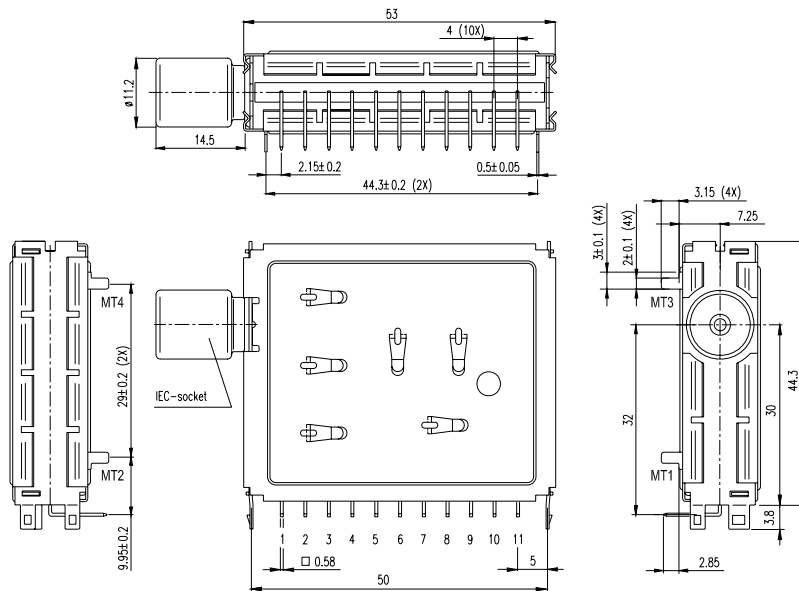
TYPE	SYSTEM	DESCRIPTION
KS-H-148 E	CCIR	Symmetrical IF, IEC connector (14.5 mm), I <sup>2</sup> C status byte, vertical mount
KS-H-148 DE	CCIR	Symmetrical IF, IEC connector (14.5 mm), I <sup>2</sup> C status byte, horizontal mount
KS-H-148 EA	CCIR	Asymmetrical IF, IEC connector (14.5 mm), I <sup>2</sup> C status byte, vertical mount
KS-H-148 EAL	CCIR	Asymmetrical IF, IEC connector (19.0 mm), vertical mount
KS-H-148 DEA	CCIR	Asymmetrical IF, IEC connector (14.5 mm), I <sup>2</sup> C status byte, horizontal mount
KS-H-148 O	OIRT	Symmetrical IF, IEC connector (14.5 mm), I <sup>2</sup> C status byte, vertical mount
KS-H-148 OP	OIRT	Symmetrical IF, phono connector, I <sup>2</sup> C status byte, vertical mount
KS-H-148 DO	OIRT	Symmetrical IF, IEC connector (14.5 mm), I <sup>2</sup> C status byte, horizontal mount
KS-H-148 OA	OIRT	Asymmetrical IF, IEC connector (14.5 mm), I <sup>2</sup> C status byte, vertical mount
KS-H-148 OAL	OIRT	Asymmetrical IF, IEC connector (19.0 mm), vertical mount
KS-H-148 DOA	OIRT	Asymmetrical IF, IEC connector (14.5 mm), I <sup>2</sup> C status byte, horizontal mount



Pin No	Address
1	AGC
2	V <sub>T</sub> / *
3	AS
4	SCL
5	SDA
6	n.c.
7	V <sub>S</sub>
8	ADC
9	V <sub>ST</sub>
10	IF output
11	IF output

\* Pin No 2 is not used for model: ...EAL, ...OAL

**Mechanical outline. Vertical mounting**



**Mechanical outline. Horizontal mounting**